



Bulletin



Volume 46 Number 6

December 2023

Draft Winery Ordinance Withdrawn for Revisions; Amphitheater Restoration Project Moves Forward; Resident Advocates for Local Roosters

by Michael Ticktin

The agenda for the November 9 meeting of the Borough Council included a first reading of a proposed ordinance to make wineries a permitted use in the R/Ag 400 agricultural zone. That, however, was not what happened. Instead, there was an extensive discussion of the proposed ordinance in the first public portion.

Beverly Tepper and Mark Pausch, the contract purchasers of the portion of Beth Battel’s farm that they intend to use as the site of the proposed vineyard and winery, questioned some of the definitions in the draft of the ordinance that was in the agenda, expressing concern that these provisions were unclear and might well cause problems going forward.

Concerns of a different sort were expressed by Michael Ticktin, who pointed out that the draft ordinance, which would have allowed outdoor entertainment until 10:00 P.M. without any limitation, would have affected a residential neighborhood and therefore needed to contain language making it explicit that the Borough’s Noise Ordinance still applied, despite the new ordinance being a later enactment that might be deemed to supersede earlier ordinances. He also indicated that the proposed ordinance needed language requiring sufficient parking spaces to accommodate as many cars as might reasonably be anticipated, without spilling over onto Lake Drive and Spruce Lane. The proposed ordinance was withdrawn for further consideration and revision.

The Council also adopted a resolution related to renovations of the Borough amphitheater, awarding a contract for professional landscape architectural services to ETM

Associates,LLC, which had submitted the winning bid for the job. The work will be supported by a \$330,000 matching grant by Monmouth County, as well as by the Fund for Roosevelt, Inc., which will provide approximately \$73,000 to help move the project forward. The Fund agreed to support the project because the amphitheater, and the monument to President Franklin Delano Roosevelt that it contains, are central to the history of Roosevelt and all that it signifies.

In the second public portion of the meeting, resident Shannon Archer expressed strong opposition to what she believed to be action that the Council was in the process of taking to take away residents’ roosters, and perhaps other birds as well. Mayor Peggy Malkin assured Ms. Archer that the Council had never discussed taking any such action, and there was no reason for anyone to believe that any such action was even contemplated by anyone on the Council. Apparently, the origin of the story was that someone had filed a complaint with Western Monmouth Animal Control (WMAC), the interlocal agency with which the Borough has contracted for animal control services, and WMAC contacted all residents known to have roosters to warn them of the need to avoid causing noise problems that might annoy other residents. After Ms. Archer said she had been unable to reach WMAC on the phone to get more information, Councilman Bob Atwood volunteered to contact them and report back to the Council. Mayor Malkin assured Ms. Archer and her supporters at the meeting that no one sent by the Council, and no one acting with authority from the Council, would ever be coming to take away their birds.

INSIDE THIS ISSUE

Memories of Hilltop Swim Club	4-5	Roosevelt Public School	8
Environmental Commission	6	Whats New in the Velt?	9
October Tree Inventory and Planning for the Future	7	Roosevelt Public School Education Foundation	11

ANNOUNCEMENTS

Welcome to the 44th edition of the Roosevelt Borough Bulletin. Issues run from September through July. We will not publish in January and August.

Roosevelt Borough Bulletin Submission Process

The Bulletin welcomes submissions for news items, information of local interest, letters to the editor, poetry, and visual arts. We ask all contributors to adhere to the following submission guidelines:

- Send your submission to the email: rooseveltbulletin submissions@gmail.com.
- Send your submission as a Microsoft Word attachment or as plain text with in the body of your email. Please do not send PDFs.
- Please include images as separate files.
- The deadline for submissions is the 15th of the month prior to publication (e.g., January 15 for the February issue). Submissions received after the 15th will normally be printed in the issue following the one currently in production.
- Most submissions will also be added to the Bulletin web site. Allow up to one week for submissions to appear online after publication of the print edition.
- Please name your files with your last name, or the name of your organization, and the month.

It's natural that people have second thoughts about what they've written, but we want to discourage multiple submissions of the same thing, whenever possible. When this is necessary, the revised version should be clearly named as a revision.

The Bulletin board members are thrilled to see that people are utilizing the Bulletin as a forum for communicating about our community's most critical issues. And it is impressive that Roosevelt has supported this publication for so many decades by contributing both financially and intellectually. We are committed to providing you with the best publication possible—your support of our submission guidelines will enable our volunteers to most effectively meet that goal.

The MEALS ON WHEELS program delivers prepared meals to Roosevelt seniors who need this assistance. Though meals are provided free of charge to recipients, the cost to the program is \$2.50 per meal. Donations to help cover these costs May be sent to Interfaith Neighbors, 810 Fourth Avenue, Asbury Park, NJ 07712

SENIOR CITIZENS: There is a S.C.A.T. bus provided by Monmouth County Division of Transportation that comes to Roosevelt and will take you shopping to ShopRite in East Windsor. There is no charge to you for this service. If you wish to go, you must call the S.C.A.T. bus at 732-431-6485 and press 1. Give them your name, address, and the town you are from, and where you wish to go.

An archive of all past issues of the Bulletin can be found online at www.mazicmusic.com/rbb.htm, courtesy of Mark Zuckerman. Current and recent issues can also be found online at www.rooseveltboroughbulletin.org., the official website of the Borough Bulletin. To have the Bulletin sent to you by email, please send your request to rpressler32@gmail.com.

The Roosevelt Borough Bulletin is published monthly, except August and January by Roosevelt Borough Bulletin, Inc. P.O. Box 221, Roosevelt, NJ 08555

BOARD OF TRUSTEES

Sharyn Walz, Assenka Oksiloff,
Rick Pressler, Kevin McNally,

Michael Ticktin

EDITOR

Michael Ticktin

MANAGING EDITOR

Rick Pressler

ASSISTANT MANAGING

EDITOR

Larisa Bondy

TREASURER / BUSINESS

Kevin McNally

CONTRIBUTING

WRITERS

Sharyn Walz	Steve Taylor
Rick Pressler	Ron Kostar
Al Hepner	Sam Ashburner
Larisa Bondy	Richard D. Smith
Marianna LeCompte	

GRAPHIC DESIGN

Hope Pressler

WEB MASTER

Assenka Oksiloff

DISTRIBUTION

Help Wanted!

Roosevelt Borough Bulletin, Inc., is a New Jersey Non-Profit Corporation

Player

My neighbor just sneezed. A plane hums far above us,
trees whispering, conversing with a gentle ripple of wind,
the light bold yet silent as if light contains silence.
Gathering his instruments, he leaves to defeat it.

Overalls escort him every day accompanied by a sock
duet, blue on the right foot counterpoint to red on left,
always arguing and making up. Only to be challenged
by dobro, then questioned by the noisy banjo. Always sitting
behind his finger dance. His ear hosting the notes
he walks and skips with. His body ever anchored to a chair,
knee respectfully supporting the guitar's body, hearing
every closing and parting of his friend's lips as if his future.

In fading light another friend enters, the end in his arms—
silence whose never been his above earth and ever will below.

-- for Paul Prestopino

– David Sten Herrstrom



Keep up to date with the latest happen-
ings, events and announcements.
[www.facebook.com/
RooseveltBoroughBulletin](http://www.facebook.com/RooseveltBoroughBulletin)

If you would like your organization's
event posted to our Facebook page,
please send event details to
rooseveltbulletin submissions@gmail.com.

Roosevelt Borough's website:
www.rooseveltnj.us

Register for e-news on the home
page and get email communications
from the borough. You can view and
pay your property taxes and water/
sewer bill on-line.

When mailing anything to Roosevelt
Borough, please use P.O. Box 128.
This includes property tax payments
and water/sewer payments.

THE ROOSEVELT BOROUGH BULLETIN

is distributed free-of-charge to Roosevelt residents. We look forward to and appreciate contributions which are very much need-
ed to keep our publication going. Contributions are tax deductible

PLEASE NOTE: Due to postal regulations we can only ask for "donations" rather than "subscriptions" from out-of-towners
who wish to receive the *BULLETIN*.

We will be pleased to continue sending them the *BULLETIN* when we receive their contributions
which, of course, can be for the same amount (or more) as in the past.

In order to save on postage, we would encourage non-residents who have computers to subscribe to the *Bulletin* online at [www.
boroughbulletin.org](http://www.boroughbulletin.org) in lieu of receiving a paper copy.

Donations from readers, wherever they may be, and regardless of the medium in which they read the *Bulletin*,
are still very much welcome, since we could not publish without your support.

PLEASE SEND IN A CONTRIBUTION TODAY. *WE NEED YOUR SUPPORT.*

Please send contributions to: Roosevelt Borough Bulletin, Inc., P.O. Box 221, Roosevelt, NJ 08555

Memories of Hilltop Swim Club

by Gabe Hoffman

What happened to Hilltop pool? For those who have recently become residents of Roosevelt, this question would most likely not make any sense. However, people who have lived in town for five years or more would be reminded of what many of us view as a previous center of community activity.

Hilltop Swim Club used to be located on 36 Clarksburg Road, across from Footlight Farm. It was where I first learned to swim (without floaties!) and got really comfortable being in deep water. In addition to swimming, it was a great way to connect with friends and other members of the community on hot summer days while simultaneously exercising and keeping cool. I had the pleasure of talking with Diana Moore who, in addition to being a Hilltop member for 32 years, was also the treasurer on the pool's board of directors for 28 years before its closure.

Hilltop Swim Club was established in 1960 as a nonprofit, a status it maintained consistently. Moore became a member in the late 1980s, and explained how it only took two years before a gentleman approached her and asked if she wanted to take his



Sarah and David Tulloss (daughter and son of Mary Tulloss) pictured at Hilltop at Sarah's birthday party, circa 1997/1998

place as treasurer. She accepted, thus becoming part of the club's Board of Directors.

"When our kids were growing up, we had a great group of members who did family things. We would do fun days with the kids. We had Hilltop breakfasts where people would cook stuff. We would cook dinners and hot dogs", explained Moore, who emphasized the opportunity Hilltop gave for people in Roosevelt as a communal location. It also proved to attract outside attention, as she recalled a number of nonlocal members from surrounding towns such as Millstone enjoying their summers at Hilltop.

As time went on, changes in lifestyle began to have noticeable effects on how involved people became with the pool. Moore states, "Over the years we tried to get other people interested; nobody had extra time to do anything. It was too much". Despite the pool's dwindling membership and its eventual closing, Moore is still able to reflect on the happy times she associates with Hilltop. She fondly remembers the experiences she had with her kids and other families in Roosevelt. "Lots of great memories and friends. Hope everyone can have an experience like that someday."

Mary Tulloss, another resident who was a longtime member, explained how she became a member around 1993 and how great a getaway the pool made. "I didn't even know how to swim, but I loved to go there and hang out. Just talking with people... Like a different world, you left Roosevelt." Like Moore, she recalls how people from Millstone and other



Fun summer at Hilltop with friends (circa 2011/2012)

surrounding communities would come and enjoy the relaxing atmosphere of Hilltop. "I got some good recipes from people for dinner before leaving," Tulloss recalls. The pool continued to be enjoyed not only by her kids, but also her grandchildren. "My youngest set of grandchildren, Elias and Levi, are now 10 and 8. As babies, I used to take them there. They were the only ones in the baby pool. They loved it there too, we would cook on the grill sometimes [hamburgers and hot dogs]".

Similar to other Roosevelt residents who used to enjoy time at Hilltop, Tulloss reminisces about the pool club as being in a different world. "The feeling of relaxation... A world where people are having fun, breeze blowing and getting away from world affairs." The fact that Hilltop was essentially a place to get away in an already quiet and peaceful town speaks to the significance it held for so many people. Hilltop was only a bike ride away for me and many other neighborhood kids, and it was a great way to not only cool off but enjoy times with friends and family.

Leonardo Garcia-Mena, who has been my friend since my earlier days at Roosevelt Public School, lives on Homestead Lane and shares many great memories of the pool from our

Continued on Page 5

Sedimental Journey

Memory of you
not standing in the river
opting for supinity
on the bank stone that bottomed old flow
in a wooden blanket

Church organist played
Dixieland Band jazz
live from Preservation Hall
for interlude

We all tuned our radios

Awoke to
sand firepit filled with ashes

Ashes of possible endings
offered up in the
Copacabana's of life,
"Cigar, cigarette, incense, firepit, body..."
another decayed return
the deepest now

St. John The Baptist
up to the waist
arm outstretched
wants to drown me
I need your womb
to be waterborne again

Fallen leaf butterfly wing
lying on the drying street
cups last night's rain
not enough to wade in

I haven't heard from you
I've searched your obituary
In the electronic void....
I may seek apparition in Bolinas or Avon or
Murgatroyd

Did you at least anoint hands in eternal Liffey Eire blood?

A spate at the mouth
to cause
logs rolling south in the swollen
missing persons in the churn
sandbar carcasses of
miscalculated bends

Stagnant wisdom has me jumping in puddles
still
a witness on the bank
not fording the current
up to the neck
in hours left
pondering
alluvial meaning

– Stephen Ring

Continued from Page 4

middle and high school years. He recalls, "I liked how cool and casual it was. It was a quiet spot to chill out, not like one of those pools with 50 families where it was all crazy." In 2018, citing changing regulatory requirements and the dwindling of membership over the years, Hilltop Swim Club announced it would not reopen for the 2019 season. While it is unfortunate that Hilltop is no longer open, as current and future generations of Roosevelt residents will no longer be able to enjoy it, it should not be looked at as a total loss.

Driving down Clarksburg Road after studying abroad for five months I noticed how much the property had changed since the pool's closure and became inspired to write this article. While the old cabana which used to house the bathrooms, showers, and storage rooms is actually still intact, a house and barn now stand on the property in the place of the former pool. I was fortunate enough to speak with the owner, Randy Curley, who explained, "I'm getting ready to retire and will be done working in another year or so. I'm playing with farm-

ing and stuff, I can't sit still". Curley not only found the location suitable enough for his farming activities, but also commented on its peacefulness. "I love it. It's peaceful. Perfect views." Despite the pool not being there anymore, the serenity of the area is clearly continuing to be enjoyed by people who are new to Roosevelt. Thus, even though we don't have that special local spot to spend summers at anymore, an upside can be found in that it has provided the space for a new resident to appreciate the uniqueness Roosevelt has to offer.

By Steve Taylor

Japanese Knotweed

This month’s article highlights an invasive species that we need to look out for, the Japanese Knotweed, *Reynoutria japonica*.

Japanese Knotweed was brought to the US in the late 1800s as an ornamental and for stream bank erosion control. It seemed like a good idea at the time. It wasn’t. It turned out to be poorly suited for bank erosion control and it was very prolific.

This invasive, herbaceous perennial is a member of the buckwheat family, Polygonaceae, and is native to East Asia in Japan, China and Korea. It can grow to ten feet tall and forms dense

stands that crowd out other plants. The stem has prominent nodes with alternating leaves. The plants bloom in late summer. The spikes of tiny whitish flowers are formed on the upper parts of the stem. The seeds that follow are triangular with thin wings. Fortunately, the seed germination rate is poor, and the seeds are eaten by birds. Unfortunately, sections of stem can root to form new plants. In the fall, the stems die back and are replaced by new growth the following spring.

You may see this invader in the area. Efforts are ongoing to remove it. Beavers are reported to eat this invasive. There is evidence that our resident beavers have found this plant tasty.

References:

- https://en.wikipedia.org/wiki/Reynoutria_japonica
- <https://extension.psu.edu/>



Seeds - Japanese Knotweed
Reynoutria japonica

Photo S Taylor
20 Sep 2023

[japanese-knotweed](https://nyis.info/invasive_species/japanese-knotweed/)

https://nyis.info/invasive_species/japanese-knotweed/

<https://mnfi.anr.msu.edu/invasive-species/JapaneseKnotweedBCP.pdf>



Flowers - Japanese Knotweed *Reynoutria japonica*

REMINDER FOR RECYCLING:

3 ft.

Always leave at least 3 feet between your garbage can and recyclable container(s). The arm that lifts the garbage can needs enough room to operate so it can avoid knocking over other containers.

Issue/ Problem	Call
Power outage	JCP&L - 1-888-544-4877
Telephone outage	Your telephone provider (phone # is on your bill)
Loose or lost dog	Animal Ctrl: 609-234-4862 or State Police 609-584-5000
Road obstruction	911 /State Police 609-584-5000
Trees down	911 /State Police 609-584-5000
Health Emergency	911
Comcast outage	1-800-COMCAST
FioS outage	(800) 837-4966
Wildlife Issues	877-927-6337

Recycling Reminders

The Roosevelt Environmental Commission would like to remind our fellow citizens of a few recycling tips. All of the following information (and more) can be found in the “Recycling 101” article written by Steve Taylor in the March 2019 Bulletin (available at <http://rooseveltboroughbulletin.org>).

Please remember:

- Do not put items inside of plastic bags in the recycling container; keep them loose.
- Plastic bags can be recycled at local grocery stores.
- Most clean paper can be put out for recycling.
- Cardboard should be flattened. Packaging tape and staples need to be removed.

October Tree Inventory and Planning for the Future

by Ellen Silverman

The Borough of Roosevelt is embarking on a project aimed at preserving and managing its valuable tree resources, enhancing public safety, and maintaining the beauty of the community's green spaces. The first step is to know what we have. Kevin Scibilia, Forestry Consulting, LLC., took two days in October to do an intensive inventory of each street tree and even the empty space where a street tree could exist. He also assessed the health of the trees. We are waiting for these reports from this project within the next several weeks. There are plans for Scibilia to give his report to the Borough Council in December.

The tree inventory will provide a wealth of valuable information, including street addresses and GPS

coordinates, species identification, diameter at breast height, age classification, health condition, and the presence of defects or issues that might affect the safety of residents and property. This information will be included in a program called "iTree Eco" and will be a good planning document for the town to use.

Roosevelt trees grow not only near our streets but also in our woodlands. A team of foresters, led by Heather Gracie, surveyed the forested lands owned by the Borough. The aim of this survey was to catalog the types and frequency of tree species found in various sections of the forest, contributing to the conservation of wildlife habitat, historic preservation, and responsible management of green infrastructure. This inventory took place over several days and started on October 24th.

As the reports come in on both of these projects they will be presented to



the Council. With this information, we will be able to plan for the maintenance and future of our valuable assets, the trees of Roosevelt.

Both Kevin and Heather's team were shadowed by the video team of Eric Vuolle and Ben Johnson. The footage and interviews from these tree experts will be part of a video about Roosevelt trees. The video will include interviews from residents as well. Stay tuned for when this will be available.

Planning for preservation of our trees will be the next step. We encourage all residents to take part in it. Please contact the Environmental Commission if you would like to be involved in planning for the future of trees in Roosevelt, enviromental@rooseveltnj.us.



Tree Removal Permits

Roosevelt Residents: tree removal requires a permit per Borough Ordinance 20-08. You can find the permit on the Borough website under the FORMS tab (<https://www.rooseveltnj.us/forms-home-page>). When you click on the link for the permit a copy of the ordinance is also attached.



Watercolor by Zach Pressler



RPS News

By Gina Morrone, RPS Principal

October and November have been hopping at RPS. We celebrated Red Ribbon Week in October with the theme: Be Kind to Your Mind and Live Drug Free. Our school social worker, Ms. Roth, led a team of 5th graders who created a large Red Ribbon Week poster which encourages students to live a healthy lifestyle and make good choices. All RPS students had the opportunity to sign it and it currently hangs in the gym as a visual reminder to Live a Healthy Lifestyle. RPS students and staff all participated in spirit theme days to show support for making good choices.

Other October activities included participation in Fire Prevention Week led by Millstone Township bravest who provided fire safety tips to students and a tour of their fire truck. This year's first assembly program was held on 10/16 with a focus on Social Emotional Learning. Lead U provided the engaging program in learning about big feelings, how to resolve a conflict, be kind and how to use dragon breaths to calm our minds. Our littlest dragons in PreK visited Red Wagon Farm and Kindergarten, Grades 1 and 4 students visited West Haven Farm with their families for some Fall fun. Both trips were provided by RPS Educational Foundation grants. The RPS Visiting Artists Program which is also funded through a RPSEF grant began with Roosevelt painter Ellen Silverman, she had two visits for a twofold stamping/painting project and visited us in both October and November.

Thank you to our families and friends for supporting our fall fundraisers which I've been told set new records. The annual Spooky Walk was a huge fundraising success that

will go towards funding the Grade 5 trip. Our first Family Game Night helped to boost Scholastic Book Fair sales and earned more money for books than any other recent year! Finally, Halloween festivities began with a parade around the front of the school and Halloween parties in all classrooms. I still have a sugar hangover. And speaking of sugar, our annual pie sales did well and the profits for those go to the 5th grade trip as well.

"There is always something to be grateful for" is a wonderful reminder to take a moment to reflect about who brings us moments of happiness in our lives. At RPS our character ed theme

for the months of November and December is GRATITUDE. Our School Social Worker, Ms. Roth, has prepared lessons that will support students in their personal reflection about gratitude. I am thankful for my amazing family, and this wonderful school community that supports one another. I am so thankful for our students that make me smile every day, and a school building full of the most dedicated teachers and staff. I am grateful for my new RPS family!

I hope you all have a wonderful Thanksgiving surrounded by friends, and family.



Buy Fresh, Buy Local, Roosevelt, NJ

Why is locally grown food important?

- It tastes better because it's picked when fresh, not harvested in advance for long-distance shipping.
- It's better for your health because fresh food contains more nutrients.
- It's better for the environment because it maintains open space and promotes sustainable practices.
- It's better for the community because it supports and creates a connection with local farm families.
- It's better for the climate because it reduces carbon emissions from long-haul transport of food.

In Roosevelt, locally grown food is available at Mendies Farm, which operates a roadside stand and CSA (Community Supported Agriculture, where members buy a share of the produce grown on the farm). The farm is owned and managed by Roosevelt residents Lawrence and Heidi Mendies.

Mendies Family Farm; Farm Stand and CSA

65 N Rochdale Avenue, Roosevelt, NJ
609-820-8809

<http://www.mendiesfarm.com/>

In neighboring towns, locations offering locally grown food include:

Produce Paradise: (roadside stand) Assunpink Wildlife Management Area, on the Clarksburg-Robbinsville Road, by the large sycamore trees.

Fun Fridays in Hightstown: 6/21 – 9/19 that takes place every 3rd Friday. Along with locally grown produce, there will also be food trucks, craft vendors and live music. Location: Association Park, Grant Ave, Hightstown, NJ
Operated by Hightstown Parks and Recreation <https://www.hightstownborough.com/events/fun-fridays-2/>

Appelget Family Farm

135 Conover Rd., West Windsor, NJ
609-902-8372

<https://www.appelgetfarm.com/>

Windsor Farm and Market

1202 Windsor Road, Windsor, NJ
(609) 443-9379

<https://www.windsorfarmandmarket.com/>

Robbinsville Farmers Market 6/25-8/27 Tuesdays, 3:30-7:00 pm

The Shoppes at Foxmoor
1095 Washington Blvd, Robbinsville, NJ 08691
Robbinsville Farmers Market Contact:
Kevin Holt, kholt@robbinsville.net
609-259-3600 x1131

Corner-Copia

619 Mercer Street
Hightstown, New Jersey 08520
(609) 208-9116

<http://www.corner-copia.com/farm-market/>

Lee Turkey Farm

201 Hickory Corner Road, East Windsor, NJ 8520
609-448-0629

<https://www.leeturkeyfarm.com/>

KJD Farm, LLC

1510 Old York Road, Robbinsville, NJ 08691
(609) 977-5937

Windy Acres Farm & CSA

214 Windsor Road, Robbinsville, NJ
Amy Giovanelli
(609) 722-2122

Farm market is open to general public located at 214 Windsor Rd, Robbinsville NJ 08691. Open 5 days. Starting early June 4 thru October 1, 2019. Hours of operation: Tuesday-Friday 11:00 am to 6:00 pm, Saturday 11:00 am to 4:00 pm. Closed Sunday and Monday.

<http://windyacresfarmllc.com/>

By Larisa Bondy

This column will serve to introduce new (or newish) neighbors and family members to the town. If you are new, or newish, to town, or just had a new addition you would like to announce, please submit your story to Rooseveltbulletinsubmissions@gmail.com. We would love to hear from you!

If you walk down Tamara Drive you will notice the house that “used to have the chickens.” Now “newish”

residents Naomi and Michael Weinschenker live there. Arriving from Manalapan in December 2019, they got to experience “Roosevelt in the pandemic,” which of course was when many residents were out walking on the roads. Naomi has already become involved with the RPS Education Foundation and looks forward to many more years as part of our community. We are always happy to

welcome new and involved residents!

On the other side of town, all the way from Oklahoma, the Laws are on Homestead. Johnny, Riley and Annika moved in March 2023, with dog Ziggy. Jonny is a low voltage/security technician, Riley works for an equine hospital and daughter Annika is a Senior at Allentown High School. Welcome to a family from the Southwest region!

Congratulations

It's official! Shamarr and Amy Hullett got married on November 5th at Patricia's of Holmdel. They have three children Avery (5), Shamarr (6) and Mya (10) and a very energetic French bulldog, Sunshine. Avery and young Shamarr both attend Roosevelt school in kindergarten and first grade, respectively.

The couple's love story began many moons ago in 2002 when they met at the boardwalk. Life took them

on separate paths only to bring them together again in 2020, after the pandemic had hit. Timing is everything! They rekindled their love and the rest is history. They are also new-ish residents to the Borough moving here in July, 2021. They look forward to raising their family in Roosevelt and have already seen many positive attributes this town has to offer.



If you have an award or accomplishment you would like recognized in the Bulletin email rooseveltbulletinsubmissions@gmail.com.

Sign Up for Code Red!!

Receive emergency notifications

From the borough.

Have the notifications go to your landline, or cell, or both!

Sign up by going to www.Rooseveltnj.us

Stay safe!

Stay informed!

Borough Mailing Instructions

When mailing anything to

Roosevelt Borough, please use

P.O. Box 128. This includes

property tax payments and

water/sewer payments.

Blues

Each snaking phrase thrilling every cell,
scorching my insides. I fold and unfold
with guitarist's strings, notes close in my ear
as lips in kiss. One note can unnote notes.
Fingers dance, arguing with themselves,
wires shake with earthquake tremors,
bending notes for answers as I bend
my body. Their shiver tattooing my skin,
my heart with luck and angels. Flesh
surrenders to this burning tiger, becomes
immensity. And walking aching wires
of joy my heart parties. Metal nerves
accusing me of being and not being
the man I am happy in the beer crowd.

-- for Dylan Altman

– David Sten Herrstrom



Watercolor by Lois Pressler

Pullman-ary Caboose
Through dappled
soon to be emaciated trees
blue went the sundown

All the words written
In the dark
for you
found their light
discovered

Stay the new world
you always were
the faulty hearts
at bay

Anthems to be pen'd
watching your fortress burning
and smiling
that the valves of the blaze
cannot be extinguished

You are no longer
waiting for your case to come up
You are on trial

From ash
flowers an iris
your purpled forever
Petal groomed
wash of no worry
your seagreen
makes it salt
and you preserve
life

– Stephen Ring



NEWSLETTER

FROM THE FOUNDATION

Another exciting year of school is well underway at RPS. The students and staff have already begun to experience many grants thanks to generous RPSEF donors. We are excited for a year full of new opportunities for RPS students. Thank you for your continued support.



Above: Students enjoyed stamp painting with Visiting Artist Ellen Silverman



Above: RPSEF participated in Monmouth County's Clean Communities Fall Clean-Up.

VISITING ARTIST PROGRAM

What is the Visiting Artist Program (VAP) at RPS? It is a wonderful way for students to gain exposure to many different varieties of the arts (visual and performing) with all kinds of ranges. Thanks to a grant from RPSEF, last year RPS had a successful year of bringing local artists talents to our students. RPS has begun to embark on yet another year of VAP!

But doesn't RPS have a music and art program? Yes, of course, but VAP enhances these programs, and allows students to discover arts that may not be in standard curriculum. The community of Roosevelt has always had a rich history in art. VAP enables the community a chance to share their talents with our youngest artists and vice versa. In some instances, students may discover a medium they were previously unaware of, or may have a spark of interest that will shape their future. Last year's arts included photography, poetry, glass painting, mural making, opera singing, and a drum circle. This year hopes to include painting, printing, window dressing design, interactive musical storytelling, ukulele playing, woodworking, and acting.

Whether meeting a medium for the first time, or getting to work with an old favorite, VAP is a highlight each month for the students of RPS. The students look forward to practicing a new technique, along with meeting and learning about local professional artists. If you are interested in being a visiting artist, please contact Larisa Bondy at larisa@rps1.org. -Larisa Bondy, RPS Kindergarten Teacher

FUNDRAISERS

School Supply Boxes, \$39.83: The School Supply Boxes Fundraiser was a new fundraiser RPSEF hosted with support from Dr. Barry & RPS Teachers. Teachers supplied Dr. Barry with a list of school supplies for the 2023-2024 school year. RPSEF then submitted a list to the School Supply Boxes company. Families were able to follow a link found on the RPS website to the company, and order all their supplies for their students. It allowed for a "One Stop Shop" approach to Back To School supply shopping. The company kindly donated 5% of sales to RPSEF! We appreciate their partnership. Many thanks to Dr. Barry and RPS Teachers for assisting in this fundraiser. Thank you to all who purchased their supplies using this fundraiser.

Monmouth County's Clean Communities Borough Clean-Up: RPSEF will receive a stipend from Clean Communities for our participation in the clean-up on 10/22. Thank you to all who came out to clean-up & also to support RPSEF.

Stefan Martin Fundraiser: "World In Their Hands" wood engraving prints are still available for \$100 each. Please contact us at rpsefdn@gmail.com to purchase a print. 100% of sales have kindly been donated to RPSEF by the Martin Family.

Below: A print of Stefan Martin's "World In Their Hands".



Above: Students in grades K & 1st attended a field trip to Terhune Orchards, Princeton NJ



GRANT UPDATES

Through generous donations, the following grants were approved between 6/9/23-10/10/23:

- Flexible Seating Options: As needed for any student
- Terhune Orchards, Princeton: K & 1st
- Red Wagon Farm, Monroe: PreK
- Visiting Artists 2023-2024 School Year: PreK-5th
October: Ellen Silverman: painting with a cardboard stamp

Words on Images Attached to Boards in Funeral Homes
Photography is winnowing my sense of time
all the measurements I've accepted
countervailed
in black and white
rendered false by Kodak
causing anachronisms

My Mother in cat eye sunglasses
looking "hipster"
with her sisters
standing along a stone wall in Branch Brook Park in 1948
like she's not waiting for a thing
something I'd never seen

maybe the cherry blossoms were in bloom

In 1970
in white short sleeve and green slacks
owning Patsy Cline's best hair day
sitting one leg crossed beneath the other
seeming almost stately and smiling
looking cool by my uncle's pool
my Dad behind holding a glass up in an imaginary toast
and my sister in their midst, bikini clad, summarily bored
staring off....
sitting al fresco in the Parisian café in her head

I'm sure I was there....I think

Moments not in my chronology
happened to me in 21st Century time
How many more lost images of my life are out there?

I sense the air blowing the numbers of my clocks in all directions
I've become a mental Harold Lloyd desperately clinging
to the hands of eternal time

I take a daguerreotype selfie
and go back to the present
one eye teared, one eye squeezed in smile

- Stephen Ring

You can pay your
Water/Sewer Bill and
Taxes on-line
Go to
www.rooseveltnj.us

Public Health Emergency?

You can call the
Monmouth County
Board of Health 24/7 at
732-431-7456

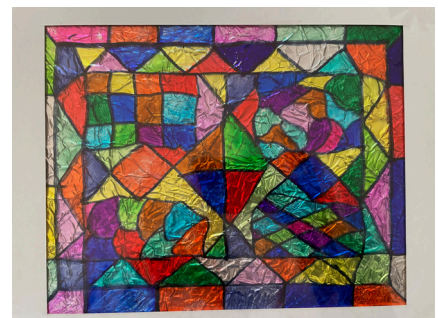
Save our Sewers – Don't Flush Wipes

Please do not flush wipes or paper towels down your toilet. Even the wipes that are labeled "flushable" are not treatable in our sewage treatment plant. They clog up the equipment and the repairs are costly.

Please do not pour household grease down your drain. This clogs the sewer lines and the repairs are costly.

Your water/sewer bill reflects the added maintenance costs caused by these wipes and household grease.

Please put your wipes, paper towels and household grease in the trash.



Collage by Lois Pressler

GENTLY DOWN THE STREAM

- A You look tired.
- B I just got back from a very long meeting.
- B About what?
- B Restoring the old water wheel in town. A worthy endeavor, but not my thing.
- A Is this something you have to go back to?
- B No, thankfully.
- A What are you going to do to revive yourself, meanwhile?
- B Try not to eat my way out of it. I once heard a dietician say, ‘Don’t eat if you’re lonely, anxious or bored.’
- A Lonely, anxious or bored. That covers a lot of ground.
- B The part that makes me anxious is what if someone from the meeting asks me if I’m going back.
- A Can’t you just say you’re busy?
- B But I’m not – in that sense. My days are filled, but on my own schedule.
- A That’s what the white lie is for – a saving grace for all concerned.
- B Or, I could just say I’m not a meeting person.
- A Then how did you end up going to this one?
- B Seemed like it was time to get more involved with the town, and thought I’d give it a whirl.
- A Then be like a whirling dervish who happened to pass through, and then whirls on.
- B You know me well. But so do some of the others who were there.
- A Now we’re going around in circles.
- B But that’s what a whirling dervish does!
- A Couldn’t that get tiring, too – not stopping, not coming to a standstill to enjoy any one moment?
- B No; the whirling becomes the moment itself. Endless. A parade of the here and now.
- A Then go back to the group, and at the next meeting, give a workshop – on whirling, and not getting stuck in the reading of the minutes. The minute would be the now, and the meeting would flow on.
- B Gently down the stream. Yes!

##

– Judith McNally

New Jersey
Department of Environmental Protection

24-Hour Hotline

1-877-WARNDEP or
1-877-927-6337

For reporting spills, hazardous discharges, and other
environmental emergencies.

Parking Reminder

Please park your vehicles in the right direction only. Parking on the wrong side of the street or in the wrong direction makes your vehicle difficult for oncoming traffic to see, especially in foggy or dark conditions. Vehicles parked on the wrong side of the street are subject to towing.

Contributors to the Bulletin 2023

Contributions received after the 15th of the month will appear in the next Bulletin.

Mary & Carlo Alfare	Al Hepner	Alison Petrilla
Sam & Nicole Ashburner	Constance & David Herrstrom	Petrillo family
Wisam Atieh	Daniel Hoffman &	Gregg & Elizabeth Possiel
Robin & Robert Axel	Assenka Oksiloff	Richard & Hope Pressler
Richard & Janet Bernardin	Louise and David Hoffman	Sara Prestopino
Linda Block	Gail Hunton & Wes Czyzewski	Steve & Peggy Ring
Marvin & Karen Block	Cynthia Imbrie	Merle & Irv Rose
Alexandra Bonfante-Warren	Sheila & Phil Jaeger	Kirk and Jane Rothfuss
Ulrich & Stacey Bonna	Michelle & Ricky Jaeger	Susan Schwartz & Jim Alt
Bondy/Vuolle family	Henry & Kate John-Alder	Kelly & Ronald Scibetti
Jacqueline Carpenter	Anna & Ben Johnson	Helen Seitz
Susan & Robert Cayne	Susan Jones	Jean Shahn
Maureen & Bob Clark	Ingrid Jordan	Nona Sherak
Keith & Patricia Clayton	Bahiru & Ann Kassahun	Linda Smith & Michael Szewczyk
William & June Counterman	Doreen Kirchner	Shirley Sokolow
Paul & Elise Cousineau	Kosa family	Emily & Steve Taylor
Ana Debevec	Ron & Deirdre Kostar	Michael & Marilyn Ticktin
Kay Drury	Naylon Larane	Mary & Rod Tulloss
Frances Duckett	Lynn Lawson	Kerry Watlington
Burt Ellentuck	David Leff	Karen Ward
Lou & Irma Esakoff	Claudia Luongo	Ralph & Nancy Warnick
Richard & Heather Giske	Steven & Mary Macher	Carol Watchler
Judith Goetzmann	Julia & Jim McArdle	Judy & Bob Weinberg
Jay & Ann Goldman	Kerri & Steve Magee	Frank Wiesinger & Theresa Secks
Len & Michele Guye-Hillis	Geraldine Millar	Joe & Diane Zahora
Marcia & Tommy Hannigan	Edward & Rose Murphy	Tony & Gail Zelenak
Timothy & Lorraine Hartley	Teri Nachtman	Mark & Judith Zuckerman
Anne Hayden	Parsons family	

Help us to fill up this page.

Thank you for your generosity!

Send in a contribution today.

Please send contributions to:

Roosevelt Borough Bulletin, Inc.

P.O. Box 221, Roosevelt, NJ 08555

BUSINESS SPONSORS

The Bulletin publishes free-of-charge public information listings from Roosevelt residents and businesses, and from those in the immediate vicinity with ties to Roosevelt. Write: Roosevelt Bulletin, Box 221, Roosevelt, NJ 08555. Contributions are appreciated and are tax-deductible (suggested: \$50.00/year, \$60.00 if over 5 lines.) Deadline is the 15th of each month

AUTOMOBILE SERVICING

COMPACT KARS

3 Trenton Lakewood Road,
Clarksburg, NJ 08510
Complete Mechanical & Auto Collision
Repairs/Towing/Select Used Cars
609-259-6373

MUSIC

DELTA NOIR

A band playing early jazz and blues and gypsy swing. Ron Kostar on clarinet and vocal; Robert Thorn on guitar and vocals; Ron Villegas on guitar; Henry Dale on stand-up bass. See us on Facebook: www.facebook.com/deltanoir. Available for parties and other occasions.

GUITAR INSTRUCTION

Age 7 & up
David Brahinsky: 443-1898
STORYTELLING & FOLK SINGING
AVAILABLE FOR PARTIES.

GUITAR LESSONS

Bill Leech
Guitar is a ton of fun. It will cheer you up when you are down, make you unbored when you are bored, and make you feel even better when you're feeling good. Learn to read music, play songs, chords, and much more. Classical (beginners), Folk, Country, and Rock (beginners to mid advanced). 609-903-7664

LESSONS IN PIANO, KEYBOARD AND MUSIC PRODUCTION

Live music for all occasions.
Gabriel Saks (609) 529-5431

PET CARE

PET PLEASERS

Dog Training Services
Certified Dog Trainer
Pet Sitter
Boarding & Grooming
609-426-4209

PAW PRINCE PET SITTING

Dog walking
Boarding
Home Visits
www.facebook.com/tashaspawprince
(908) 809-2888

MATH TUTORING

ROOSEVELT STUDENTS:

Elementary through College
Do you occasionally need help with math homework or help preparing for a test? Call Mary Tulloss (Retired H.S. Teacher) for appt.: 609-448-5096
Tutoring provided at no charge in loving memory of Sarah Tulloss.

PERSONAL CARE

TAI CHI CLASSES

Roosevelt Boro Hall
Wednesday 9:30 am – 11 am
Thursday 6:00 pm – 7:30 pm
June Counterman 609-448-3182

HOME IMPROVEMENT CONSTRUCTION, E T A L

QUEST AIR MOLD REMEDIATION, LLC

Mold inspection, testing, removal, and remediation.
Water damage and floor restoration.
Serving commercial and residential properties.
Licensed and insured. FREE inspection.
www.questairmoldremediation.com
1-888-664-5325 609- 301-8475

YOURI NAZAROV COMPLETE HOME REMODELING

609-443-3388
Long term contractor with Twin Rivers Association. A resident of Roosevelt Kitchens, bathrooms, basements, flooring, interior doors, painting, architectural moldings and so much more.
Free estimates. Licensed and insured.

ARTHUR R. STINSON CONSTRUCTION

Since 1982 Specializing in Home Addition, Bathrooms & Kitchens & Finished Basements
Brick & Concrete Patios-Stamped Concrete
Energy-Saving Windows & Doors
Ceramic Tile
Free Estimates State License
609-865-6117 #13VH00923900
Fully Insured

TIMBERWOLF TREE SERVICE

* Shaping * Tree Removal * Lots Cleared * Mulch * Snow Removal * Stump Grinding * Hedge Trimming * Firewood
John (609) 918-1668
Insured Quality Work
www.timberwolftreeservice.com

EAST WINDSOR FLOOR COVERING

We've got your entire floor covering needs
WOODVINYL**TILE**CERAMIC**
Wall-to-Wall Carpets, Area Rugs
East Windsor - 609-443-6999

HAGUE HEATING & COOLING LLC

For all your Heating & Air Conditioning needs
Family owned and operated
Over 30 years in the business
NJ LIC.# 19HC00144600
Call 609-448-5424 Fax 609-469-5908

DR.K's DESIGNSCAPES INC.

P.O. Box 516, Roosevelt, NJ 08555
(609) 448-1108 / (732) 939-2085
www.drksdesignscapes.com
Fully Insured & Licensed
Craig Kaufman, President
Snow Plowing & Snow Removal
Complete Lawn and Tree Services Designs / Planting Plans / Lighting
Spring & Fall Clean-Up
Mulch / Stone / Top Soil
Gutter Clean-Out / Power Washing
Pest Control / Driveways / Retaining Walls / Concrete Staining / Sealing
Patios Natural Stone & Concrete Pavers
Fencing / Fire Wood

OTHER SERVICES

MENDIES FAMILY FARM

65 N. Rochdale Ave., Roosevelt
Year-Round Farming
Community-Supported Agriculture(CSA)
Spring/Summer/Winter CSA memberships
(609)-820-8809 • www.mendiesfarm.com

THE ADLERMAN AGENCY, INSURORS

Handling houses in Roosevelt on every street in town since the early 1940s.
317 Forsgate Dr., Monroe Twp., NJ 08831
| (609) 655-7788

KIDDIE ACADEMY OF UPPER FREEHOLD

5 Allyson Way, Allentown, NJ-609-208-2530
Conveniently located near Exit 11 off 195
Just 10 minutes from Roosevelt, near Tractor Supply and behind Roy's Deli.
Call today and schedule a tour!

ASPEN TREE & TURF


(732) 928-5747
Offering the highest level of tree care since 1976, with 11 NJ Licensed Tree Experts on staff. Free Estimates. Fully Insured.

Tree Pruning * Tree Removal * Stump Grinding * Insect & Disease Control * Tick & Mosquito Control * Lawn Treatments
www.aspen-tree.com




PRSR STD
Postal Customer
Roosevelt, NJ 08555-0221

DECEMBER

4	Mon.	7:00 pm	Council Meeting Borough Hall Peggy Malkin, Mayor
	Weds.		Recycling Pickup
18	Mon.	7:00 pm	Council Meeting  Borough Hall Peggy Malkin, Mayor
19	Tues.	7:00 pm	Planning Board Meeting Borough Hall
20	Weds.	7:00 pm	Environmental Commission, Borough Hall
	Weds.		Recycling Pickup



JANUARY

		7:00 pm	Council Meeting Borough Hall Peggy Malkin, Mayor
	Weds.		Recycling Pickup 
		7:00 pm	Council Meeting Borough Hall Peggy Malkin, Mayor
16	Tues.	7:00 pm	Planning Board Meeting Borough Hall
17	Weds.	7:00 pm	Environmental Commission, Borough Hall
	Weds.		Recycling Pickup



RECYCLING DATES

December,
January,

Construction and Permits

The Construction Official has Borough hours on Wednesdays from 1:00 to 3:00 pm.

Questions regarding building permits should be directed to:
Department of Community Affairs - 609-567-3653
Monday-Friday 8:00 a.m. – 4:30 p.m.

Zoning Officer,
Housing Inspector
Jeremy Kuipers
email: zoning@rooseveltnj.us
phone: 609-448-0539, ext. 7

Code Enforcement
Officer
Ed Szbanz
code@rooseveltnj.us
609-448-0539, ext. 8

Office Hours:
Mondays 5:00 pm - 6:00 pm
Inspection Hours:
Mondays 6:00 pm - 7:00 pm

<https://rooseveltnj.us/other-government/zoning-officer>

The Roosevelt Board of Education's website contains complete school calendar information:
www.rps1.org.

Please send notice of your events to the Roosevelt Borough Bulletin at P.O. Box 221 or email to RooseveltBulletinSubmissions@gmail.com.