

Bulletin

Volume 48 Number 1

August 2025

Council Adopts New Ordinances: Yes to Cannabis, No to Roosters

by Rick Pressler

The Roosevelt Borough Council adopted two significant ordinances at its meeting of July 21: Ordinance No. 2025-10 limits the keeping of chickens within the Borough to a maximum of twelve animals and prohibits the keeping of roosters; and Ordinance 2025-11 permits cannabis cultivation.

Microbusiness Cannabis Cultivation Approved

The cannabis ordinance, an amendment to zoning regulations for the R-Ag/400 zone (locations reserved for agricultural use) permits cultivation of cannabis within the Borough, while maintaining the prohibition of all other cannabis businesses. The ordinance limits cultivation to a single licensee and includes several key measures to address concerns about quality of life impacts, including greenhouse materials and size, setbacks and fencing, odor and noise mitigation, the shielding of lighting to prevent impacts on adjacent properties, and security. The ordinance has been a subject of substantial debate within the community over the past several months, and it appears that provisions within the adopted ordinance respond to concerns raised during public comments at Council meetings.

Both state and borough licenses will be required to operate a cannabis business. The initial borough application fee is \$5,000, with an annual renewal of \$2,500. The borough has also established a 2% Local Cannabis Transfer Tax on sales and a Local Cannabis User Tax at the same rate. The ordinance defines a range of fines for violations.

For more detail about key provisions, see page 3.

Chickens by the Dozen, Roosters Banned

Ordinance 2025-10 clarifies and limits the right of residents to keep chickens on residential properties and prohibits the keeping of roosters. The ordinance, which appears to come in response to complaints by some residents, establishes regulations which appear to balance residents' desire to keep chickens with the rights of their neighbors to be protected from free-ranging chickens and the sound of roosters.

To keep chickens, residents must now obtain a zoning permit from the Zoning Officer. Renters are required to show written permission from the property owner. In addition to the permit, an annual license fee of \$25 is required.

The ordinance sets a limit of twelve chickens per residential lot and entirely prohibits roosters, although any residents with more than twelve chickens as of June 1, 2025, or who own a rooster, are permitted to keep their animals for the remainder of the animals' "natural life."

Other regulations detail management:

- Chickens must be kept within property boundaries.
- Chicken feed must be stored in a covered, secured metal container off the ground to avoid attracting vermin or rodents.
- Chickens cannot be kept for consumption or sale, and slaughtering is prohibited within the borough.
- All structures and fencing for chickens must comply with the borough's design and zoning standards, and construction permits must be obtained if required.

The "Chicken Ordinance" was the subject of much public interest, and sparked a lively public debate over the past several months. Posters appeared on the Borough

Continued on Page 3

INSIDE THIS ISSUE

Roosevelt is 90?	4-5	Querida Avó Mimi, (Letters from an Immigrant)	9
Environmental Commission	6	Little Free Library	10
Roosevelt Open Mic Night	8	Roosevelt Public School	11

ANNOUNCEMENTS

Welcome to the 48th edition of the Roosevelt Borough Bulletin. Issues run from August through July.

Roosevelt Borough Bulletin Submission Process

The Bulletin welcomes submissions for news items, information of local interest, letters to the editor, poetry, and visual arts. We ask all contributors to adhere to the following submission guidelines:

- Send your submission to the email: rooseveltbulletin submissions@gmail.com.
- Send your submission as a Microsoft Word attachment or as plain text with in the body of your email. Please do not send PDFs.
- Please include images as separate files.
- The deadline for submissions is the 15th of the month prior to publication (e.g., January 15 for the February issue). Submissions received after the 15th will normally be printed in the issue following the one currently in production.
- Most submissions will also be added to the Bulletin web site. Allow up to one week for submissions to appear online after publication of the print edition.
- Please name your files with your last name, or the name of your organization, and the month.

It's natural that people have second thoughts about what they've written, but we want to discourage multiple submissions of the same thing, whenever possible. When this is necessary, the revised version should be clearly named as a revision.

The Bulletin board members are thrilled to see that people are utilizing the Bulletin as a forum for communicating about our community's most critical issues. And it is impressive that Roosevelt has supported this publication for so many decades by contributing both financially and intellectually. We are committed to providing you with the best publication possible—your support of our submission guidelines will enable our volunteers to most effectively meet that goal.

The MEALS ON WHEELS program delivers prepared meals to Roosevelt seniors who need this assistance. Though meals are provided free of charge to recipients, the cost to the program is \$2.50 per meal. Donations to help cover these costs May be sent to Interfaith Neighbors, 810 Fourth Avenue, Asbury Park, NJ 07712

SENIOR CITIZENS: There is a S.C.A.T. bus provided by Monmouth County Division of Transportation that comes to Roosevelt and will take you shopping to ShopRite in East Windsor. There is no charge to you for this service. If you wish to go, you must call the S.C.A.T. bus at 732-431-6485 and press 1. Give them your name, address, and the town you are from, and where you wish to go.

An archive of all past issues of the Bulletin can be found online at www.mazicmusic.com/rbb.htm, courtesy of Mark Zuckerman. Current and recent issues can also be found online at www.rooseveltboroughbulletin.org, the official website of the Borough Bulletin. To have the Bulletin sent to you by email, please send your request to rpressler32@gmail.com.

The Roosevelt Borough Bulletin is published monthly, except August and January by Roosevelt Borough Bulletin, Inc. P.O. Box 221, Roosevelt, NJ 08555

BOARD OF TRUSTEES

Sharyn Walz, Assenka Oksiloff,
Rick Pressler, Kevin McNally,

Michael Ticktin

EDITOR

Michael Ticktin

MANAGING EDITOR

Rick Pressler

ASSISTANT MANAGING

EDITOR

Larisa Bondy

TREASURER / BUSINESS

Kevin McNally

CONTRIBUTING

WRITERS

Sharyn Walz	Steve Taylor
Rick Pressler	Ron Kostar
Al Hepner	Sam Ashburner
Larisa Bondy	Richard D. Smith
Marianna LeCompte	

GRAPHIC DESIGN

Hope Pressler

WEB MASTER

Assenka Oksiloff

DISTRIBUTION

Help Wanted!

Roosevelt Borough Bulletin, Inc., is a New Jersey Non-Profit Corporation

bulletin board alongside the Post Office, and pro-chicken/rooster advocates were active on social media. A petition in support of rooster ownership was distributed in the spring.

Access to Ordinances

Copies of the adopted ordinances, along with the full

agenda of the July 21, 2025, meeting can be viewed on the Borough website at https://www.rooseveltnj.us/_Content/pdf/agendas/2025-07-21-Council-Agenda.pdf.

Key Provisions of the Microbusiness Cannabis Cultivators Ordinance 2025-11

- A “Microbusiness Cannabis Cultivator” is defined as a cultivator operating in a greenhouse no larger than 2,500 square feet.
- Only one cannabis cultivator license will be issued within the borough.
- Cultivation structures must be one-story greenhouses, no more than 15 feet high, with vertical walls no more than 10 feet high.
- Structures must be setback at least 80 feet from all public roads and rights-of-way.
- Fencing can’t be more than 8 feet high and can’t have barbed or razor wire.
- Exterior lighting must be shielded to avoid shedding direct light on adjacent properties or public roads.
- All operations must have an Odor Mitigation Plan and equipment to prevent cannabis odors from being detectable at the property line.
- The business must not be located in an area prohibited by state or federal law, such as near a school, park, or youth center.
- A state and borough license is required to operate a cannabis business. The initial application fee is \$5,000, with an annual renewal fee of \$2,500.
- The borough imposes a 2.0% Local Cannabis Transfer Tax on sales and a Local Cannabis User Tax at the same rate.
- Licenses can be suspended or revoked for violations of the ordinance or state laws.
- Violations can result in fines up to \$500 for a first offense and \$2,000 for subsequent offenses, or imprisonment or community service.
- Public consumption of cannabis is illegal and subject to a civil penalty up to \$200.
- Consumption or possession by underage individuals on private property is also illegal and carries fines ranging from \$100 to \$350 depending on the offense and amount.

THE ROOSEVELT BOROUGH BULLETIN

is distributed free-of-charge to Roosevelt residents. We look forward to and appreciate contributions which are very much needed to keep our publication going. Contributions are tax deductible

PLEASE NOTE: Due to postal regulations we can only ask for “donations” rather than “subscriptions” from out-of-towners who wish to receive the *BULLETIN*.

We will be pleased to continue sending them the *BULLETIN* when we receive their contributions which, of course, can be for the same amount (or more) as in the past.

In order to save on postage, we would encourage non-residents who have computers to subscribe to the *Bulletin* online at www.boroughbulletin.org in lieu of receiving a paper copy.

Donations from readers, wherever they may be, and regardless of the medium in which they read the *Bulletin*, are still very much welcome, since we could not publish without your support.

PLEASE SEND IN A CONTRIBUTION TODAY. ***WE NEED YOUR SUPPORT.***

Please send contributions to: Roosevelt Borough Bulletin, Inc., P.O. Box 221, Roosevelt, NJ 08555

Roosevelt is 90?

By Albert Hepner

B.B. must have had a dream. He had been gallivanting all over the U.S.A. and thought this piece of land would be a great place for people to live and develop a collective approach to life. He hoped to get the rich people to agree to pockets of poverty. Just take a small section of the fertile country and have friendly folks agree to work the land so all poor folks could benefit from a rich earth. People could plow this fabulous surface and ready it for growth. Vegetables, fruits, and animals were already part of the environment, already hanging out doing nothing in 1935.

So B.B. went to visit the Roosevelts, folks who owned acres upon acres of this land all over N.Y. State. He figured they wouldn't mind if a few poor folks had a part of what was known as New Jersey to develop for themselves collectively. It might have been a progressive thought, but since few people in the USA knew much about the radical ideas of collectivism, it sounded nice and cute to the Roosevelts.

Think about it: two miles by two miles of dirt and they'd call it a town and work together to grow the necessary food and housing to get about 900 people living a life of luxury. Well BB got it started.

The Roosevelts agreed and helped provide the necessary elements: the property, the people who'd dreamed of living in the countryside, and the federal assistance to meet community needs. For the most part, dreamers picked up on the opportunity to live in the "country" and benefit from the fresh air and to have neighbors who would get on with each other. The "dream" started.

Some people worked on a collective farm, and others began working in a collective coat factory. The latter was started so the town could begin to earn some money while the farms evolved. Consequently, several needle workers from nearby city facto-

ries moved to what was then called Jersey Homestead and later renamed Roosevelt.

I moved to Roosevelt in 1962 because my third child was born in NYC in a two-bedroom apartment, so one more room was needed. I should have known what to expect right away. My Aunt Flora who'd lived in Roosevelt since the early 1940s told us a political story from back then. The borough, like all other municipalities in Jersey, would elect a Democratic committeeman and committeewoman as well as a Republican committeeman and committeewoman. The town was over-represented by Democrats and under-represented by Republicans. Out of sheer frustration to find a Republican woman representative, the Republicans asked Flora, an avid Democrat, to run for the Republican representative position. Since no one else was running, she won. Flora had been delighted that she'd be one of two people making the Republican decisions in town. Our family laughed and rejoiced at the political numbers: 890 Democrats vs. 10 Republicans.

The first few weeks that I commuted to NYC for work, my wife would tell me about an older looking man, around 90, who would walk along Pine Drive, our side street, very very slowly. It appeared that every step was painful. As city people, we didn't yet know the small-town collegiality that was commonplace. But my wife wanted to help. She took one of our extra folding chairs and set it up on the edge of our property facing the street that the old man walked back and forth on every day. Two days later she noticed that he stopped and rested on the chair both going and returning. We heard later from a neighbor how nice it was of us to have put the chair out for Moishe who went to synagogue every morning. It was quite a few months later, just before he died, that Moishe thanked us for putting the chair out for him. We had never

spoken to him except occasionally to greet him.

Years later, another neighbor on School Lane, who walked the town often, exclaimed "We're on this earth for twelve seconds, say hello to everybody." We were glad we had. E.M.T. were strange initials to city people, so when one of our neighbors told us about his most memorable life-saving event as an EMT, we never forgot. He told about one of our ninety-year-old neighbors on Pine Drive who had called the First Aid for help. Jeff K. was on duty that day. He scooted down Pine, for that's where he also lived, and went to help the injured neighbor who was lying under an empty light fixture and a broken ladder. Jeff asked him what had happened. The injured man explained that the fixture needed a bulb, so he fetched his ladder and went to replace the bulb. The ground was uneven, the ladder was six feet tall, the light fixture was nine feet high, the ladder broke when the ninety-year-old man reached the highest rung. Jeff asked him, "What did you think this was going to get you?" The old man survived.

This incident brings another EMT story to mind. Most of us Rooseveltians probably recall the gas station on Rochdale Avenue. Years ago, our school principal, Mitchell, also served on our First Aid Squad. The typical practice when a First Aid call came in, was to direct it to the Vasseur gas station because everyone knew there would always be someone present to answer it. The gas station was perfectly located across from the First Aid building, and someone could get to the ambulance quickly.

Our wonderful school principal-first aider happened to be visiting Frenchie, the owner of the gas station, who told him that a call had come in for someone to go rescue a person who had gotten hurt at the nudist colony in town. Yes, Roosevelt had a nudist colony off Route 571. Tradi-

tionally, the first First Aid responder would be the ambulance driver, so Mitchel who was just across the street from the ambulance and was told who had called, yelled out to Vasseur, "hold up two minutes before you call all responders," so he'd be the ambulance driver who drove the ambulance and just watched his colleagues help the wounded nudist. The nudist survived.

Roosevelt experienced a multitude of tragedies as well wonderful events. Here are some memories of delightful moments from a ninety-year-old survivor. One of the funniest ever was related to Pine Drive. Aaron was a resident of Pine Drive. He was an engineer who worked near New Brunswick. One evening while coming home through one of the foggiest evenings of the year, he stopped in Hightstown to call his wife Evelyn to explain that he'd barely gotten to Hightstown in 90 minutes and that it might take him another hour to get home. He didn't want her to worry any more that she probably was already worrying. When he explained how invisible everything on the road was, Evelyn literally screamed on the phone for him to remember that there was a very nice inexpensive hotel right on Route 130 and not to bother coming home because it was too dangerous. He assured her that he would be extremely careful and would continue his difficult and slow journey because he wanted to be home with her. He apologized for cutting short the conversation but had to get going; it was also the only way he would win that argument.

He got back in his car on Route 130 (the Turnpike had not been built yet) and drove through town to South Main Street heading toward Etra Road. He knew it would be incomprehensible to anyone that he'd want to drive in what turned out to be the foggiest evening of any year. He could barely see five feet ahead of his car. Fog in those years was a common occurrence, but not that thick. Nev-

ertheless he eased his car slowly towards Etra Road and just a few feet before reaching the left turn he'd have to make, he noticed a car heading towards him that hadn't gotten to the corner but had a right turn signal flashing. Hurray, he yelled to himself and slowed down so the other driver would make his turn first and take Etra Road first. He'd be able to drive with another car's lights leading him to Roosevelt. His clever decision reminded him how smart he had been to go on to school and become an engineer. He felt his face smiling continuously thinking how he'd brag to Evelyn about how clever he'd been. After much time had passed of this tedious drive, a drive where he couldn't see anything except the other man's bumper, the car's rear lights suddenly turned red.

Aaron panicked but stopped right on time. He took a deep breath, opened his car door, stepped out, and with the greatest affront screamed at the other driver, who'd also stepped out of his car,

"Why did you STOP? YOU WERE DOING SO WELL?"

"We're in my driveway!!!"

No one ever discovered where the other man lived, but everyone who heard the story laughed hard. And everyone survived!

Public Health Emergency?

You can call the
Monmouth County
Board of Health 24/7
at 732-431-7456

Bee Wary

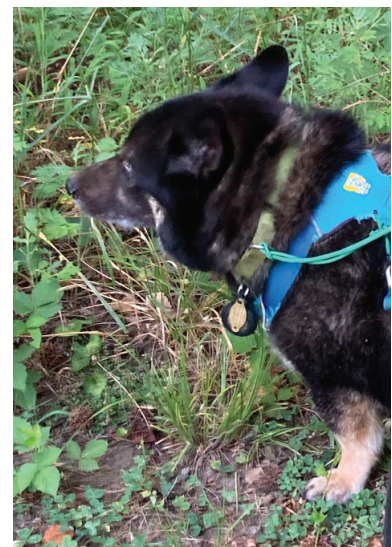
*Dedicated to Scarlet, R.J., and Chester
and all the doggies and kitties
who learned the hard way.*

What's that buzzin' in my ear?
A flyin' thing and, hey, it's near!
Lookin' like a fuzzy treat,
I think it might be good to eat.
Here I go, I'm chompin' in.
Yelp! It stabbed me in the chin!

Ow! Yeow! 'Got blown up fast!
My puffy jowls got snack attacked!
Holy smokes! My chin! My nose!
Who'd have thought that treats bite
back?!!

Too late for me but not for you.
So, take this tip from me:
Leave buzzin' things the heck alone.
Just let them bumble bee.

—By Oli Macher,
Translated by Mary Macher



Pokeweed



By Steve Taylor

This month's article highlights a native species that we need to look out for, Pokeweed, (*Phytolacca americana*).

Most natives should be encouraged, but there are a few that are not endangered and have characteristics that make them undesirable. Pokeweed is one of those. It is considered a pest. It is native to most of North America. All parts of the plant including the berries are toxic, particularly for young children. Birds are unaffected by the toxins.

This herbaceous perennial grows 4 to 10 feet tall with stems that may vary from green to reddish purple. The leaves are 2 to 5 inches long. The black fruit is about ¼ inch across and hangs from the plant in bunch-

es. Birds enjoy the fruit. You might notice the resulting purple spots on your car. In the fall, the plants die down to the ground leaving the very large root to winter over. The seeds can remain dormant in the ground for years before germinating. The plants are usually sufficiently well separated so they can be easily removed with a shovel.

References:

https://en.wikipedia.org/wiki/Phytolacca_americana

<https://ipm.ucanr.edu/PMG/PESTNOTES/pn74173.html>

<https://www.inaturalist.org/taxa/48599-Phytolacca-americana>



Pokeweed Fruit Cluster
(*Phytolacca americana*)

photo S Taylor



Young Pokeweed Plant

Photo S Taylor

Recycling Reminders

The Roosevelt Environmental Commission would like to remind our fellow citizens of a few recycling tips. All of the following information (and more) can be found in the "Recycling 101" article written by Steve Taylor in the March 2019 Bulletin (available at <http://rooseveltborough-bulletin.org>).

Please remember:

- Do not put items inside of plastic bags in the recycling container; keep them loose.
- Plastic bags can be recycled at local grocery stores.
- Most clean paper can be put out for recycling.
- Cardboard should be flattened. Packaging tape and staples need to be removed.
- Any rigid #1, #2, and #5 plastic, regardless of shape or color, can now be put into your recycle bin, along with glass bottles and jars, cereal and snack boxes, cardboard, office paper, newspaper, magazines, tin, aluminum, and steel cans.

Issue/ Problem	Call
Power outage	JCP&L - 1-888-544-4877
Telephone outage	Your telephone provider (phone # is on your bill)
Loose or lost dog	Animal Ctrl: 609-234-4862 or State Police 609-584-5000
Road obstruction	911 / State Police 609-584-5000
Trees down	911 / State Police 609-584-5000
Health Emergency	911
Comcast outage	1-800-COMCAST
FioS outage	(800) 837-4966
Wildlife Issues	877-927-6337

Seniors Are Moving Along



Oh the senior are moving along~
This sounds like it could be a song~
Yes we went on a trip to Monmouth Library - just a real treat~
Into the archives - that's going way deep ~
Lunch to follow - another fine cuisine ~
I am always looking ahead to the restaurants - on this I am so keen~
Listening to the CareGivers Volunteers~
Our own lunch is always divine - and all right here~
Even a concert at Princeton U and a dinner at someplace new~
Tulips, tulips, and more tulips are ready for us to cut ~
Holland Ridge Farms - and then to one the best places in Allentown - But
Also, there was Senior Service Health Fair ~
Right here at our own Borough Hall~
There was lots to learn - so much info here - you all~
We went on the best lunch cruise again - down along Toms River~
This win-win trip-does seriously deliver ~
Last but not least- our table on the Fourth of July~
Roosevelt's celebration is my favorite - that's no lie~
If that's not enough - there will be more ~
Come and join our special group - I've said it before~
Seniors are are going places galore ~
It's stimulating and fun and oh so much more!!!

Adrienne Cheshier

Sign Up for Code Red!!

Receive emergency notifications from the borough.

Have the notifications go to your landline, or cell, or both! Sign up by going to

www.Rooseveltnj.us

Stay safe! Stay informed!

Parking Reminder

Please park your vehicles in the right direction only. Parking on the wrong side of the street or in the wrong direction makes your vehicle difficult for oncoming traffic to see, especially in foggy or dark conditions. Vehicles parked on the wrong side of the street are subject to towing.

REMINDER FOR RECYCLING:



Always leave at least 3 feet between your garbage can and recyclable container(s). The arm that lifts the garbage can needs enough room to operate so it can avoid knocking over other containers.

Power Outages

In the event outages occur due to severe weather, customers without power are encouraged to report their outage by calling 1-888-LIGHTSS (1-888-544-4877), clicking the "Report Outage" link on www.firstenergycorp.com, or by texting out to 544487.

Customers should immediately report downed wires to 1-888-LIGHTSS (1-888-544-4877) or call their local police department. JCP&L reminds customers to stay away from downed wires, even if they believe they are no longer carrying electricity. Extra caution should be used in areas where downed lines are tangled with trees or other debris. Motorists are cautioned to treat intersections with inoperable traffic signals as four-way stops.

JCP&L customers can subscribe to email and text message alert notifications to receive weather updates in advance of major storms and updates on scheduled or extended power outages. Visit www.firstenergycorp.com/connect to enroll.

Follow JCP&L on Twitter @JCP_L, on Facebook at www.facebook.com/JCPandL or online at www.jcp-l.com



**Saturday, August 9th,
6–9pm at the
FDR Memorial Amphitheatre**

Rochdale Avenue (Rt. 571) in Roosevelt, NJ

**A community open mic night
for neighborhood artists
to express themselves**



Open to everyone and anyone to perform,
collaborate, jam, or tell a joke or two with their fellow
Rooseveltians and area neighbors

**Hosted by Gus Vuolle
Call for more information: 609-462-3041**

**An event hosted by Roosevelt Arts Project (RAP).
Suggested donation: \$5, benefits RAP.**

WWW.ROOSEVELTARTSPROJECT.ORG

Querida Avó Mimi, (Letters from an Immigrant)

by Catarina Noronha

Querida Avó Mimi,

That's how I start the letters to my granny.

Living away from home is a paradoxical existence. What is home anyway?

I grew up in a small town in Portugal, where my family still lives. As a young adult, I felt very disconnected from that place. I never quite felt I belonged, so I started to travel, hoping to find something I didn't know what it was yet. Later, I found out I was searching for home. I still haven't found it.

The first times I was backpacking alone were an exciting melting pot of feelings and emotions. I was living my own adventures, like a character in a book, creating stories and connecting with people. I loved the freedom of living without a plan: I could leave at any time to anywhere. I could stay in the same place as long as I was happy. During this time, I started to send postcards from the places I visited to one of my grannies, Mimi, who also loves to travel. There was something about the physicality of the process that I found very precious: choosing the postcard, writing it on a train or a bus stop and mailing it, hoping it would get to its destination – the corner of the table in my granny's living room – safely.

Eventually, the excitement was replaced with exhaustion. My body was tired – probably too many nights sleeping in a bus – and my mind and soul were drained. I realized how much I missed my house and my room and how much the sense of a personal space was important for my wellbeing. I recognized how much I missed my people and my friends and how much the sense of community is important for us humans.

Life, later love, made me move to the US and I officially became an immigrant.

In the late 60's, during the fascist dictatorship in Portugal, my grandpa Zé, as thousands of other Portuguese people, immigrated to France searching for a better life. During the 41 years of dictatorship, Portugal had strict borders and was ruled by Salazar and his state police – PIDE. The social classes were highly divided and most of people lived in misery and fear. My grandpa Zé passed away in 2020 and I never talked with him about his struggles during this time, so everything I have are broken reports from his wife – my granny Gracinha – and my imagination. This is a tale as old as time: people leaving their birth place, in search for something. For my grandfather that something was as basic as sustenance for his family. I was lucky enough to always have my basic needs met, so my search was for ideals.

I never really thought about myself as an immigrant until now. I was so used to being in foreign lands that I didn't notice the subtle shift from being a traveler to becoming an immigrant. I am still an outsider. I still don't feel at home.

A few months after the start of my green card application, the Trump administration won the elections and I am living what I learned in history books: fascism is slow and sneaky, pushing the edges of morality disguised as righteous. It divides the many between "us" and "them"

while the few profit from it. It uses propaganda, bright colors, and fireworks, and plays with one of the most powerful feelings in human nature: the sense of belonging. Belonging to a home, to a group, to a country.

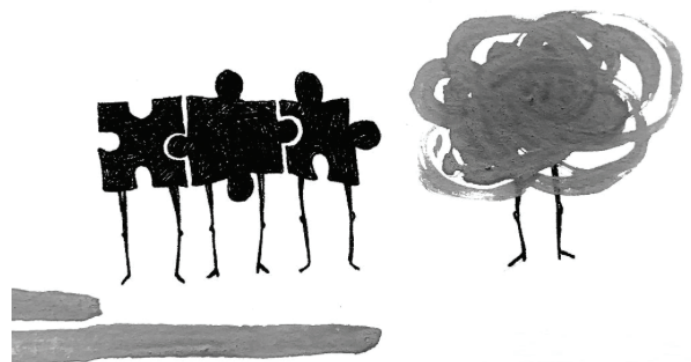
Being white and European is a privileged place to be, but as we learned from Martin Niemöller, they eventually will come for me.¹ I am an immigrant. I am a radical who believes in the liberation of all people. I am a woman who dares.

Living in the US made me realize the reason why I felt so disconnected from my hometown and my family and friends as a young adult had nothing to do with the place or the people, but rather the lifestyle dominant within western society: the production culture, the consumerism, the general lack of education on politics and the planet. We live in "The Century of the Self"², and I feel I don't belong here.

This piece is the preface for an artist book I am working on, telling the story of becoming an immigrant in my journey searching for home.

1. Reference to Martin Niemöller poem "First they came..." from 1946

2. Reference to Adam Curtis documentary "The Century of the Self" from 2002



RPS Education Foundation Update

by Stephanie Pinney

The students closed out the school year enjoying several grant funded activities! Kindergarten-3rd grade students visited the State Theatre to view a live performance of *Underneath the Magical Moon*. This theatre experience was brought to life in the classroom the following week, when the visiting artist offered an opportunity for all of the students to engage in acting exercises! Among



many educational benefits, improv promotes creativity, empathy, perspective, self-awareness, and helps to build confidence and self-esteem.

We want to take this opportunity to send a heartfelt thank you to our immediate past president Mary Tulloss. Mary brought RPSEF to life in 2013 and poured her heart into ensuring

our foundation fulfilled its mission to educate and inspire all students to do their best academically and to become independent and creative thinkers, skillful communicators, and lifelong learners. Mary, your dedication has inspired everyone around you and your incredible contributions will undoubtedly leave a lasting impact on the RPS students. We truly appreciate all your years of service for RPSEF and the community of Roosevelt!

We also thank all of our donors and supporters for your ongoing generosity and backing. We hope everyone is enjoying their summer and look forward to what the next school year will bring!

Little Free Library: take a book, share a book

by Larisa Bondy

Little Free Library is a non-profit organization, spreading the joy of reading nationwide. You may have noticed a few pop-up Rooseveltwide this July.

Thanks to a project conceived by Ellen Silverman while she was heading the Environmental Commission, there are now three in town. Located at the Pine/Tamara triangle, the Homestead Lane Triangle, and the head of the Woodland Trail on Rochdale, they are beautifully painted and filled with books.

Michael Merrit put the Little Library kits together, and they were

painted by Yasmeen Atieh, Kendall Lecompte, and Clover Balon. In addition to the free reading inside, viewers



can enjoy the artwork on the outside, including nature scenes and landmarks of Roosevelt. Clover Balon who painted the library on the Homestead triangle said, "My inspiration for the box is the beauty of different spots of Roosevelt through the day. The different scenes depict how Roosevelt has its beauties through dawn to dusk."

The libraries were "planted" by Dave Teich and Michael Merrit and are set now for growth. Merrit said,

"I hope the neighbors will make these little libraries their own, sharing mind-opening, captivating, and challenging books for all ages." The Rochdale library was intended to be nature-centered, as it is at the head of the trail. All libraries now include books for adults and children to browse, borrow, read, and add some of their own to share.

Shout out to the creators, builders, and artists of this project, bringing the joy of reading a little closer and easier to find for our community.





August 2025

ROOSEVELT PUBLIC SCHOOL: READY FOR A BRIGHT NEW YEAR!

RPS COMMUNITY,

As summer winds down, we're getting ready to open our doors and hearts for another joyful year at Roosevelt Public School! While students are still soaking up the final days of summer, the building has been buzzing with excitement behind the scenes.

From fresh floors to fresh ideas, our staff has been working hard to make sure everything is ready to go. A special shoutout to Mrs. Green and Ms. Maddie for keeping us organized, and to Mr. Somers, whose dedication has the building sparkling from top to bottom!

We're also thrilled to welcome two new educators to our team:

Jackie Dawson, Art Teacher

Caitlin McClain, 3rd Grade Teacher

Both bring incredible passion, talent, and heart to our school community, and we can't wait for students to learn and grow with them.

One of the most exciting additions this year is a brand-new Social-Emotional Learning (SEL) space in our school lobby—made possible by a generous grant from the Roosevelt Public School Education Foundation. This calming, student-focused area will help support our students' emotional wellness and reinforce our new Dragon H.E.A.R.T. core values:

HELP OTHERS, EXPRESS CREATIVITY, ACT WITH KINDNESS, RESPECT ALL, AND TRY YOUR BEST

Whether you're a neighbor, alumni, or community partner, we thank you for being part of what makes Roosevelt Public School such a special place. Here's to another school year filled with creativity, kindness, and community.

Warmly,

Lindsay Perine

Principal, Roosevelt Public School



Buy Fresh, Buy Local – 2025 - Roosevelt, NJ

Why is locally grown food important?

- It tastes better because it's picked when fresh, not harvested in advance for long-distance shipping.
- It's better for your health because fresh food contains more nutrients.
- It's better for the environment because it maintains open space and promotes sustainable practices.
- It's better for the community because it supports and creates a connection with local farm families.
- It's better for the climate because it reduces carbon emissions from long-haul transport of food.
- It's fun!

In Roosevelt, Lawrence and Heidi Mendies offer locally grown food at their farmstand and through their CSA.

Local farms & farmstands selling fruits & vegetables

Mendies Family Farm	65 N Rochdale Ave, Roosevelt
Produce Paradise	Clarksburg-Robbinsville Rd, Assunpink WMA
Hyland Farm	1042 Windsor Rd, Millstone Twp
Rising Sun Farm & Country Store	26 Rising Sun Tavern Rd, Millstone Twp
Krackerjack Farm Market	619 Rt 33 East, Millstone Twp
Kyle Family Farm	831 Windsor-Perrineville Rd, East Windsor
Lee Turkey Farm	201 Hickory Corner Rd, East Windsor
Stults Farm	146 Cranbury Neck Rd, East Windsor
Emery's Farm	346 Long Swamp Rd, New Egypt
Westhaven Farm Inc.	725 Rt 524, Allentown
Battleview Orchards	91 Wemrock Rd, Freehold
This Must be The Farm	36 Georgia Rd, Freehold
Cedarville Farms	Trenton Farmers Market-960 Spruce St, Lawrence Twp
Corner-Copia	Trenton Farmers Market-960 Spruce St, Lawrence Twp
Farmer Al's Market & Green-houses	387 Buckelew Ave, Monroe Twp
Pop's Farm Market & Garden Center	238 Cranbury Station Rd, Monroe
Red Wagon Farm Market (autumn)	437 Rt 33, Manalapan and 136 Applegarth Rd, Monroe Twp
Indyks Farm	595 Spotswood-Englistown Rd, Monroe Twp
KJD Farm, LLC	1510 Old York Rd, Robbinsville
Indigo Valley Farms	283 Rt 539, Cream Ridge
Stone Tavern Orchards (autumn)	73 Rues Rd, Cream Ridge
Lasky Farm	80 S Main St, Windsor
Carchesio Farms	565 Tennent Rd, Manalapan Twp

Wineries & Breweries

Working Dog Winery	610 Windsor-Perrineville Rd, Robbinsville
Cream Ridge Winery	145 Rt 539, Cream Ridge
Screamin Hill Brewery & Farm	83 Emley's Hill Rd, Cream Ridge
Laurita Winery	35 Archertown Rd, New Egypt

Farmers Markets

Robbinsville	Miry Run Rec. Area, 66 Sharon Rd
West Windsor	877 Alexander Rd
Monroe	4 Municipal Plaza, Monroe Twp
Freehold	Hall of Records, 1 East Main St
Princeton	55 Witherspoon St
Trenton	960 Spruce St, Lawrence Twp
Tri-County Co-op	619 Mercer St, Hightstown
Jackson	Jackson Justice Complex, 2 Jackson Dr

Farms selling flowers, mushrooms, etc

Moonshot Farms	415 Imlaystown Rd, East Windsor
Appelget Farm	135 Conover Rd, West Windsor
Two Rivers Mushrooms	145 Stillhouse Rd, Millstone

Pick your own

Stargazer Fields	17 Olde Noah Hunt Rd, Millstone
Holland Ridge Farms	108 Rues Rd, Cream Ridge
Happy Day Farm	106 Iron Ore Rd, Manalapan
Tindall Farms	1201 Old Trenton Rd, West Windsor Twp
Hallock's U-Pick Farm	38 Fischer Rd, New Egypt
Lee Turkey Farm	201 Hickory Corner Rd, East Windsor

ROOSEVELT SENIOR CITIZEN CORP



Roosevelt Senior Citizen Corp: Now accepting applications for Affordable Senior/ Subsidized Apts. 1; 2 Bedrooms. For more information, please contact :Mail: Cervelli Management, 1Marine Plaza, Suite 304, North Bergen, NJ 07047

Qualified applicants will be placed on a waiting list in chronological order according to postmarked date and time, or if hand delivered, the date and time of the application will be marked. Applicants MUST meet certain age or disability requirements and income requirements to be eligible for this program. Applicants MUST BE 62 years of age or older OR disabled in order to meet requirements. Rent is calculated at 30% of monthly income.

EOH: We encourage and support an affirmative advertising and market program in which there are no barriers to obtaining housing because of race, color, religion, sex, handicap, familial status or national origin. If you have a disability and need assistance with the application process, please contact our waiting list coordinator at 201-868-6300 ext 38

CALL: 201-868-6300

1-17 N Valley Rd, Roosevelt,
NJ 08555

Cervellimanagement@realestatenj.com



RECYCLING DATES

August 13 & 27

September 10 & 24

Save our Sewers – Don't Flush Wipes

Please do not flush wipes or paper towels down your toilet. Even the wipes that are labeled “flushable” are not treatable in our sewage treatment plant. They clog up the equipment and the repairs are costly.

Please do not pour household grease down your drain. This clogs the sewer lines and the repairs are costly.

Your water/sewer bill reflects the added maintenance costs caused by these wipes and household grease.

Please put your wipes, paper towels and household grease in the trash.

Nature Poem

I am a swimming webbed feet otter.
I wonder what it is like to be a land animal.
I hear clams opening.
I see my pup.
I want to see the world.
I am a swimming webbed feet otter.

I pretend I can go to the bottom of the ocean.
I feel like a mouse.
I touch the sand with my feet.
I worry I might get eaten.
I cry when my pup does.
I am a swimming webbed feet otter.

I understand that something bad might happen.
I say I am smart.
I dream I can swim as far as I want.
I try to keep my friends safe.
I hope I can teach my pup well
I am a swimming webbed feet otter.

— Aria Hopcroft-5th grade



New Jersey Department of Environmental Protection

24-Hour Hotline

1-877-WARNDEP or 1-877-927-6337

For reporting spills, hazardous discharges,
and other
environmental emergencies.

Contributors to the Bulletin 2025

Contributions received after the 15th of the month will appear in the next Bulletin.

Carlo & Mary Alfare
Robin & Robert Axel
Elsbeth Battel
Richard & Janet Bernardin
Linda Block
Ulrich & Stacey Bonna
Susan & Robert Cayne
Cherie Chelst
Cheshier family
June Counterterman
Walter & Linsey Coyoy
Ana Debevec
Kay Drury
Frances Duckett
Burt Ellentuck
Louis Esakoff
Judith Goetzmann
Jay & Anna Goldman
Alicia & Joel Gonzalez
Anne Hayden

Albert Hepner
Constance & David Herrstrom
Louise and David Hoffman
Gail Hunton & Wes Czyzewski
Henry & Kate John-Alder
Anna & Ben Johnson
Ingrid Jordan
Doreen Kirchner
Kosa family
Ron & Deirdre Kostar
Bonnie Z. Koury
Lynn Lawson
Claudia Lluno & Ken Mateo
David Luongo
Steven & Mary Macher
Julia & Jim McArdle
Alan Mallach
Michael Merritt & Hilary Wilder
Jodi & Dave Parsons
Alison Petrilla
Steve & Peggy Ring

Richard & Hope Pressler
Raines family
Heriberto Ramirez
Irving & Amanda Rose
Kirk and Jane Rothfuss
Susan Schwartz & Jim Alt
Fred & Linda Septak
Jeb Shahn
Linda Smith & Michael Szewczyk
Sokolow Family
Michael & Marilyn Ticktin
Mary & Rod Tulloss
Alexandra Bonfante Warren
Ralph & Nancy Warnick
Judith Weinberg
Naomi & Michael Weinshenker
Frank Wiesinger & Theresa Secks
Joe & Diane Zahora
Tony & Gail Zelenak
Mark & Judith Zuckerman

Thank you for your generosity! Send in a contribution today. Please send contributions to:

Roosevelt Borough Bulletin, Inc. P.O. Box 221, Roosevelt, NJ 08555

Borough Mailing Instructions

When mailing anything to Roosevelt Borough, please use P.O. Box 128. This includes property tax payments and water/sewer payments.

You can pay your
Water/Sewer Bill and Taxes
on-line
Go to www.rooseveltnj.us

BE A GOOD
NEIGHBOR
Please clean-up after
your dog.



Tree Removal Permits

Roosevelt Residents: tree removal requires a permit per Borough Ordinance 20-08. You can find the permit on the Borough website under the FORMS tab (<https://www.rooseveltnj.us/forms-home-page>). When you click on the link for the permit a copy of the ordinance is also attached.



Find us on
Facebook

Keep up to date with the latest happenings, events and announcements.

www.facebook.com/RooseveltBoroughBulletin

If you would like your organization's event posted to our Facebook page, please send event details to rooseveltbulletin submissions@gmail.com.

BUSINESS SPONSORS

The Bulletin publishes free-of-charge public information listings from Roosevelt residents and businesses, and from those in the immediate vicinity with ties to Roosevelt. Write: Roosevelt Bulletin, Box 221, Roosevelt, NJ 08555. Contributions are appreciated and are tax-deductible (suggested: \$50.00/year, \$60.00 if over 5 lines.) Deadline is the 15th of each month

AUTOMOBILE SERVICING

Compact Kars

3 Trenton Lakewood Road,
Clarksburg, Nj 08510
Complete Mechanical & Auto Collision
Repairs/Towing/Select Used Cars
609-259-6373

MUSIC

Delta Noir

A Band Playing Early Jazz And Blues And
Gypsy Swing. Ron Kostar On Clarinet
And Vocal; Robert Thorn On Guitar
And Vocals; Ron Villegas On Guitar;
Henry Dale On Stand-Up Bass. See Us
On Facebook: www.facebook.com/Deltanoir. Available For Parties And
Other Occasions.

Guitar Instruction

Age 7 & Up
David Brahinsky: 443-1898
Storytelling & Folk Singing
Available For Parties.

Lessons in Piano, Keyboard and Music Production

Live Music For All Occasions.
Gabriel Saks (609) 529-5431

PET CARE

Pet Pleasers

Dog Training Services - Certified Dog Trainer
Pet Sitter
Boarding & Grooming
609-426-4209

Paw Prince Pet Sitting

Dog Walking, Boarding , Home Visits
www.facebook.com/Tashaspawprince
(908) 809-2888

MATH TUTORING

Roosevelt Students:
Elementary Through College
Do You Occasionally Need Help With
Math Homework Or Help Preparing For
A Test?
Call Mary Tulloss (Retired H.s. Teacher)
For Appt.: 609-448-5096
Tutoring Provided At No Charge
In Loving Memory Of Sarah Tulloss.

PERSONAL CARE

Tai Chi Classes

Roosevelt Boro Hall
Wednesday 9:30 Am – 11 Am
Thursday 6:00 Pm – 7:30 Pm
June Counterman 609-448-3182

HOME IMPROVEMENT

Quest Air Mold Remediation, Llc

Mold Inspection, Testing, Removal, & Remediation.
Water Damage And Floor Restoration.
Serving Commercial And Residential Properties.
Licensed And Insured. Free Inspection.
www.questairmoldremediation.com
1-888-664-5325 609- 301-8475

Youri Nazarov Complete Home Remodeling

609-443-3388
Long Term Contractor With Twin Rivers
Association. A Resident Of Roosevelt
Kitchens, Bathrooms, Basements,
Flooring, Interior Doors, Painting,
Architectural Moldings And So Much more.
Free Estimates. Licensed And Insured.

Timberwolf Tree Service

* Shaping * Tree Removal * Lots Cleared
* Mulch * Snow Removal * Stump
Grinding * Hedge Trimming * Firewood
John (609) 918-1668
Insured Quality Work
www.timberwolftreeservice.com

East Windsor Floor Covering

We've Got Your Entire Floor Covering Needs
WoodVinyl**Tile**Ceramic**
Wall-To-Wall Carpets, Area Rugs
East Windsor - 609-443-6999

Hague Heating & Cooling Llc

For All Your Heating & Air Conditioning Needs
Family Owned And Operated
Over 30 Years In The Business
Nj Lic.# 19hc00144600
Call 609-448-5424 Fax 609-469-5908

Dr.k's Designscaapes Inc.

P.o. Box 516, Roosevelt, Nj 08555
(609) 448-1108 / (732) 939-2085
www.drksdesignscaapes.com
Fully Insured & Licensed
Craig Kaufman, President
Snow Plowing & Snow Removal
Complete Lawn And Tree Services
Designs / Planting Plans / Lighting
Spring & Fall Clean-Up
Mulch / Stone / Top Soil
Gutter Clean-Out / Power Washing
Pest Control /Driveways / Retaining
Walls / Concrete Staining / Sealing
Patios Natural Stone & Concrete Pavers
Fencing / Fire Wood

Aspen Tree & Turf

(732) 928-5747
Offering The Highest Level Of Tree Care
Since 1976, With 11 Nj Licensed Tree Ex-
perts On Staff. Free Estimates. Fully Insured.
Tree Pruning * Tree Removal * Stump
Grinding * Insect & Disease Control * Tick
& Mosquito Control * Lawn Treatments
www.aspen-tree.com

OTHER SERVICES

Mendies Family Farm

65 N. Rochdale Ave., Roosevelt
Year-Round Farming
Community-Supported Agriculture(Csa)
Spring/Summer/Winter Csa Memberships
(609)-820-8809 • www.mendiesfarm.com

The Adlerman Agency, Insurors

Handling Houses In Roosevelt On Every
Street In Town Since The Early 1940s.
317 Forsgate Dr., Monroe Twp., Nj 08831
| (609) 655-7788

Kiddie Academy Of Upper Freehold

5 Allyson Way, Allentown, Nj-609-208-2530
Conveniently Located Near Exit 11 Off 195
Just 10 Minutes From Roosevelt, Near
Tractor Supply And Behind Roy's Deli.
Call Today And Schedule A Tour!

PET WASTE POLLUTES OUR WATERS

What can you do to help protect our waters

Pick up after your pets. Properly dispose of pet waste into the trash. Animal waste contains coliform bacteria, which is harmful to our health.

Carry a newspaper or plastic bag to pick up the waste while walking your pet.

When treating your pet and yard for fleas or ticks, check with your veterinarian for safe substitutes. Never dispose of flea dip liquid on the ground or in the storm drain. It should be disposed of as a household hazardous waste.

Visit www.state.nj.us/dep/dshw/rnp/hhwcp for list of county household hazardous waste disposal centers.

Do not feed wildlife such as geese, pigeons, ducks and deer.

Feeding results in more pollution from their waste.

For more information please contact the following:

New Jersey Department Of
Environmental Protection Division Of
Water Quality

Bureau Of Nonpoint Pollution Control

Municipal Stormwater Regulation Program
(609)633-7021
www.njstormwater.org

PRSRT STD

Postal Customer

Roosevelt, NJ 08555-0221

AUGUST

4	Mon.	7:00 pm	Council Meeting Borough Hall Peggy Malkin, Mayor
9	Sat	6:00 - 9:00 pm	Open Mic Night Roosevelt Arts Project FDR Memorial Ampitheater
13	Weds.	3:00 - 6:00 pm	Veterans Resource Fair The Fort Athletic Club, 114 Saltzman Ave., Oceanport
13	Weds.		Recycling Pickup ♻️
20	Weds.	7:00 pm	Environmental Commission, Borough Hall
27	Weds.		Recycling Pickup ♻️
28	Thurs.	6:00 pm	RPS Board of Education Ken LeCompte, President



Please send notice of your events to the
Roosevelt Borough Bulletin at P.O. Box 221 or email to
RooseveltBulletinSubmissions@gmail.com.

Zoning Officer,
Housing Inspector
Jeremy Kuipers
email: zoning@rooseveltnj.us
phone: 609-448-0539, ext. 7
Office Hours:
Mondays 5:00 pm - 6:00 pm
Inspection Hours: Mondays 6:00 pm - 7:00 pm
<https://rooseveltnj.us/other-government/zoning-officer>

Code Enforcement
Officer
Ed Szbanz
code@rooseveltnj.us
609-448-0539, ext. 8

SEPTEMBER

1	Mon.		Labor Day
2	Tues.	7:00 pm	Council Meeting Borough Hall Peggy Malkin, Mayor
4	Thurs.		First Day of School RPS, MHK, HHS
10	Weds.		Recycling Pickup ♻️
15	Mon.	7:00 pm	Council Meeting Borough Hall Peggy Malkin, Mayor
16	Tues.	7:00 pm	Planning Board Meeting Borough Hall
16	Tues.	6:30 pm	Melvin H. Kreps Back to School Night
17	Weds.	7:00 pm	Environmental Commission, Borough Hall
17	Weds.		Rossevelt Public School Hightstown High School Back to School Night
22	Mon.		First Night of Rosh Hashanah
23	Tues.		School Closed RPS, MHK, HHS
24	Weds.		School Closed Rossevelt Public School
24	Weds.		Recycling Pickup ♻️
26	Mon.		Early Dismissal Rossevelt Public School
25	Thurs..	6:00 pm	RPS Board of Education Ken LeCompte, President
30	Fri.		Early Dismissal Roosevelt Public School

Construction and Permits

The Construction Official has Borough hours on
Wednesdays from 1:00 to 3:00 pm.

Questions regarding building permits should be directed to:
Department of Community Affairs - 609-567-3653
Monday-Friday 8:00 a.m. – 4:30 p.m.